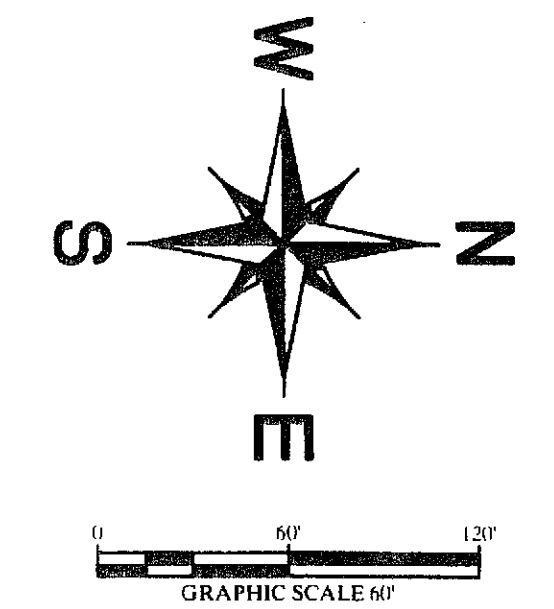


# WAL-MART AT PALM SPRINGS

A REPLAT OF A PORTION OF TRACTS 10, 11, 12, 19, 20, AND 21, MODEL LAND COMPANY'S SUBDIVISION OF SECTION 20, TOWNSHIP 44 SOUTH, RANGE 43 EAST, ACCORDING TO THE PLAT RECORDED IN PLAT BOOK 5, PAGE 79, OF THE PUBLIC RECORDS OF PALM BEACH COUNTY, FLORIDA  
 VILLAGE OF PALM SPRINGS  
 SHEET 3 OF 4  
 APRIL 2011

P.O.C.  
 NW CORNER SEC. 20,  
 TWP. 44S, RNG 43 E.,  
 FD. PALM BEACH CO. NAIL & DISK  
 SEE CCR#00473

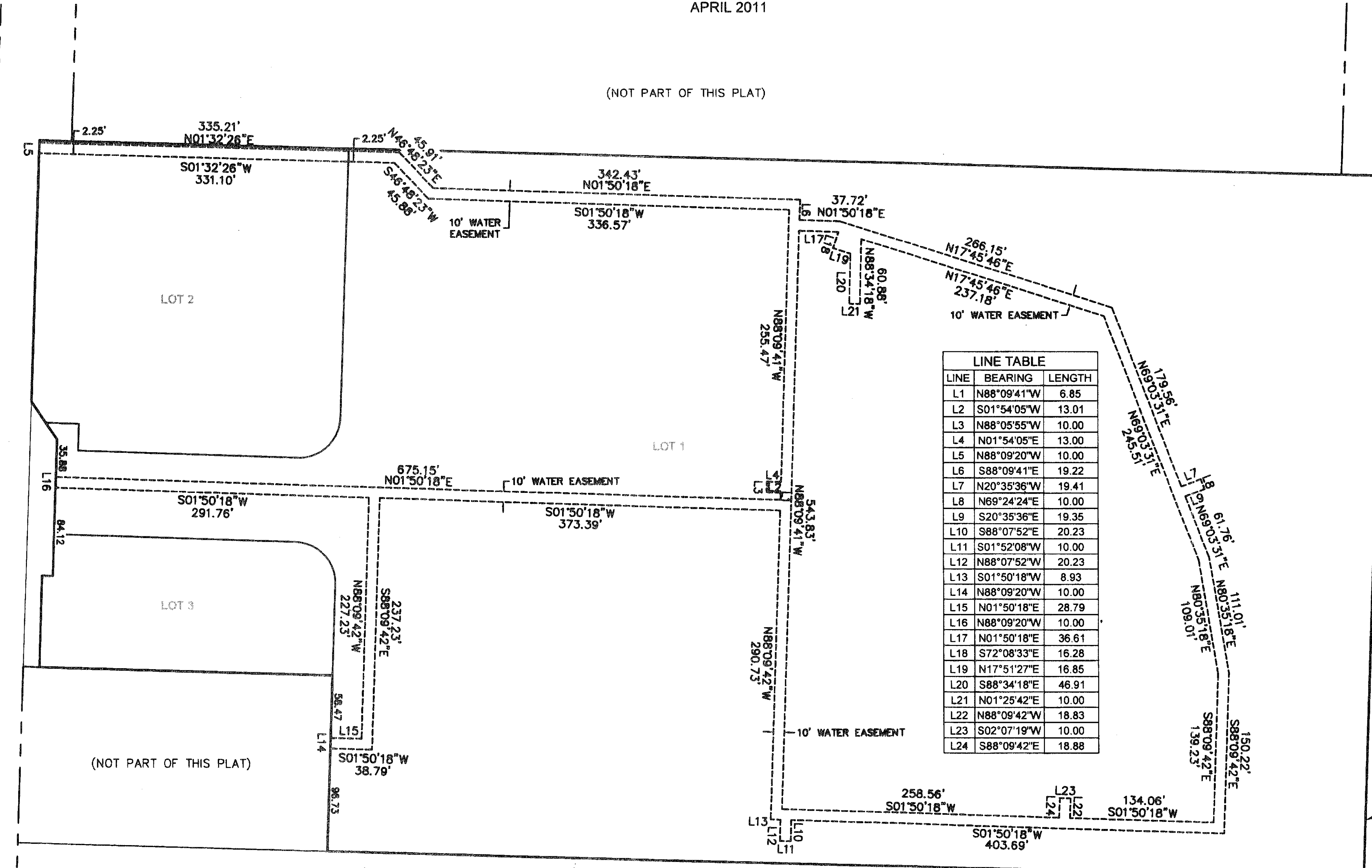
69



## LEGEND OF SYMBOLS AND ABBREVIATIONS

- PLATTED LINE
  - - - - - RIGHT-OF-WAY LINE
  - CENTERLINE
  - - - - - ORIGINAL TRACT LINE
  - - - - - EASEMENT LINE
  - - - - - SECTION LINE
- CCR CERTIFIED CORNER RECORD
  - CH CHORD
  - CB CHORD BEARING
  - Co COMPANY
  - Δ DELTA ANGLE
  - DB DEED BOOK
  - E EAST
  - INC INCORPORATED
  - L LENGTH
  - N NORTH
  - No NUMBER
  - ORB OFFICIAL RECORD BOOK
  - PB PLAT BOOK
  - PG PAGE
  - PLS PROFESSIONAL LAND SURVEYOR
  - POB POINT OF BEGINNING
  - POC POINT OF COMMENCEMENT
  - PRM PERMANENT REFERENCE MONUMENT as NOTED
  - PSM PROFESSIONAL SURVEYOR AND MAPPER
  - R RADIUS
  - R.O.W RIGHT-OF-WAY
  - RNG RANGE
  - S SOUTH
  - SEC SECTION
  - SQ FT SQUARE FEET
  - T TANGENT
  - TWP TOWNSHIP
  - TYP TYPICAL
  - W WEST
  - LWDD LAKE WORTH DRAINAGE DISTRICT
  - DENOTES SET PERMANENT REFERENCE MONUMENT
  - 4"X4" CONCRETE MONUMENT WITH DISK STAMPED "KHA LB 696 PRM" OR PK NAIL AND DISK STAMPED "KHA LB 696 PRM"
  - DENOTES LOT CORNERS SET 5/8" IRON REBAR & CAP STAMPED "KHA LB 696" OR PK NAIL AND DISK STAMPED "KHA LB 696"

LINE	BEARING	LENGTH
L1	N88°09'41"W	6.85
L2	S01°54'05"W	13.01
L3	N88°05'55"W	10.00
L4	N01°54'05"E	13.00
L5	N88°09'20"W	10.00
L6	S88°09'41"E	19.22
L7	N20°35'36"E	19.41
L8	N69°24'24"E	10.00
L9	S20°35'36"E	19.35
L10	S88°07'52"E	20.23
L11	S01°52'08"W	10.00
L12	N88°07'52"W	20.23
L13	S01°50'18"W	8.93
L14	N88°09'20"W	10.00
L15	N01°50'18"E	28.79
L16	N88°09'20"W	10.00
L17	N01°50'18"E	36.61
L18	S72°08'33"E	16.28
L19	N17°51'27"E	16.85
L20	S88°34'18"E	46.91
L21	N01°25'42"E	10.00
L22	N88°09'42"W	18.83
L23	S02°07'19"W	10.00
L24	S88°09'42"E	18.88



(NOT PART OF THIS PLAT)

LOT 1

(NOT PART OF THIS PLAT)

(NOT PART OF THIS PLAT)

THIS INSTRUMENT WAS PREPARED BY:  
  
 Kimley-Horn and Associates, Inc.  
 445 24TH STREET, SUITE 200, VERO BEACH, FL 32960  
 PHONE: 772-794-4100 FAX: 772-794-4130  
 WWW.KIMLEY-HORN.COM LB 696

**NOTICE:**  
 THIS PLAT, AS RECORDED IN ITS GRAPHIC FORM, IS THE OFFICIAL DEPICTION OF THE SUBDIVIDED LANDS DESCRIBED HEREIN AND WILL, IN NO CIRCUMSTANCES, BE SUPPLANTED IN AUTHORITY BY ANY OTHER GRAPHIC OR DIGITAL FORM OF THIS PLAT. THERE MAY BE ADDITIONAL RESTRICTIONS THAT ARE NOT RECORDED ON THIS PLAT THAT MAY BE FOUND IN THE PUBLIC RECORDS OF THIS COUNTY.

NE CORNER OF THE NW QUARTER SEC. 20, TWP. 44S, RNG 43 E., FD. CMD PALM BEACH CO. SEE CCR#53524